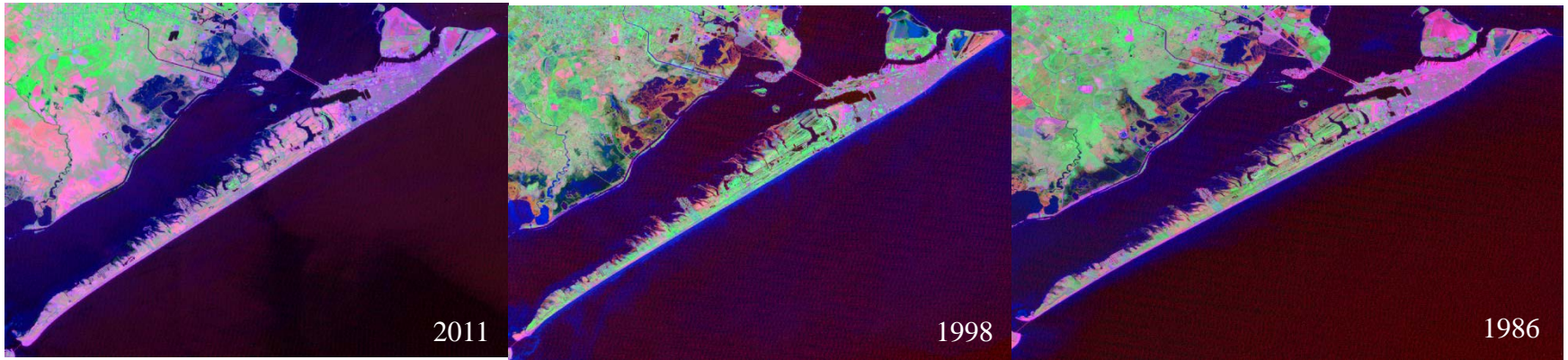




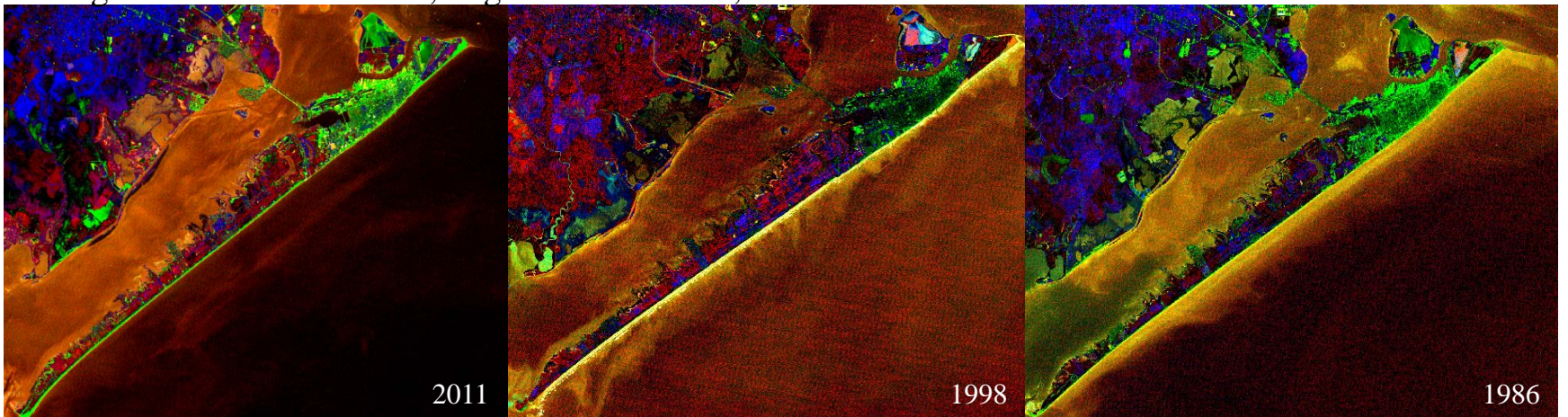
Landsat 5 Imagery of Urban Development in Galveston Island, Texas 1986-2011

Mahsa Esmaeili, B. B. Maruthi Sridhar

Department of Environmental and Interdisciplinary Sciences, Texas Southern University, Houston, TX



Three ratio Color composite image where $R3/1$, $R4/2$, $R5/3$ are represented as Blue, Green, and Red respectively. Urban regions are shown in Red, Vegetation in Green, Water as Dark Blue.



Multispectral Landsat 5 imagery of the Galveston Island shown in principle color component image where PC3, PC4, PC5 are represent as Blue, Green, and Red respectively. Urban area appears as Purple, Vegetation in Green, and Water as Brown color.