



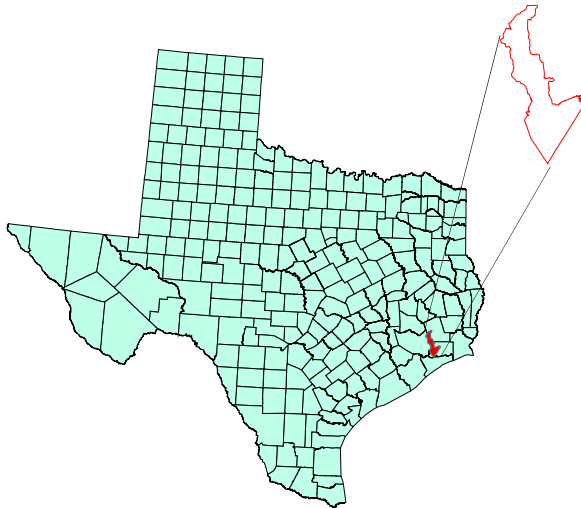
Land Use and Land Cover Changes in the North Galveston Bay Watershed Region in Texas

Hoda A. Eltayeb*, and B. B. Maruthi Sridhar

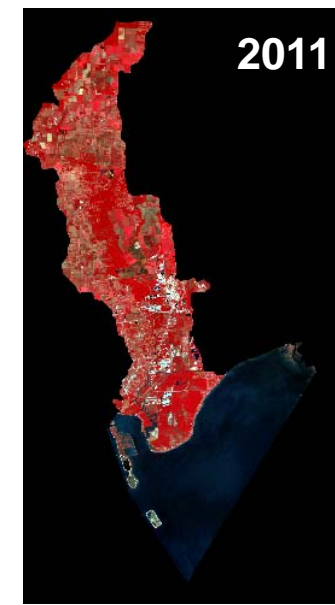
¹Department of Environmental and Interdisciplinary Sciences, Texas Southern University, Houston, TX.

*Email: h.eltayeb6315@student.tsu.edu

Study Area: North Galveston Bay Watershed



1984



2011

The pseudo color imagery of North Galveston Bay Watershed region where Landsat bands 2, 3 and 4 are represented as Blue, Green and Red respectively. All the vegetation is shown in Red and Water in blue color.

Objective: The objective of the study is to show the land use and land cover changes in the North Galveston Bay watershed region using Landsat imagery.



1984

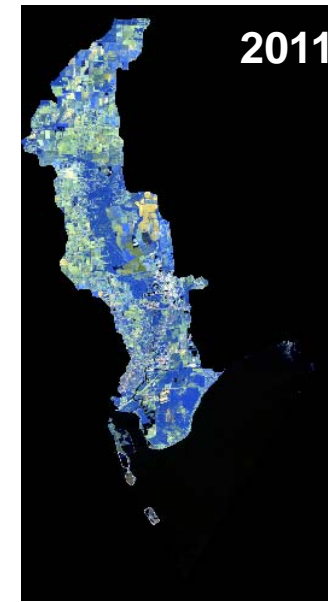


2011

The natural color imagery of North Galveston Bay Watershed region where Landsat bands 1, 2 and 3 are represented as Blue, Green and Red respectively.



1984



2011

The pseudo color imagery of North Galveston Bay Watershed region where Landsat bands 4, 5 and 7 are represented as Blue, Green and Red respectively. All the vegetation is shown in blue, water in black and bare soil in green.