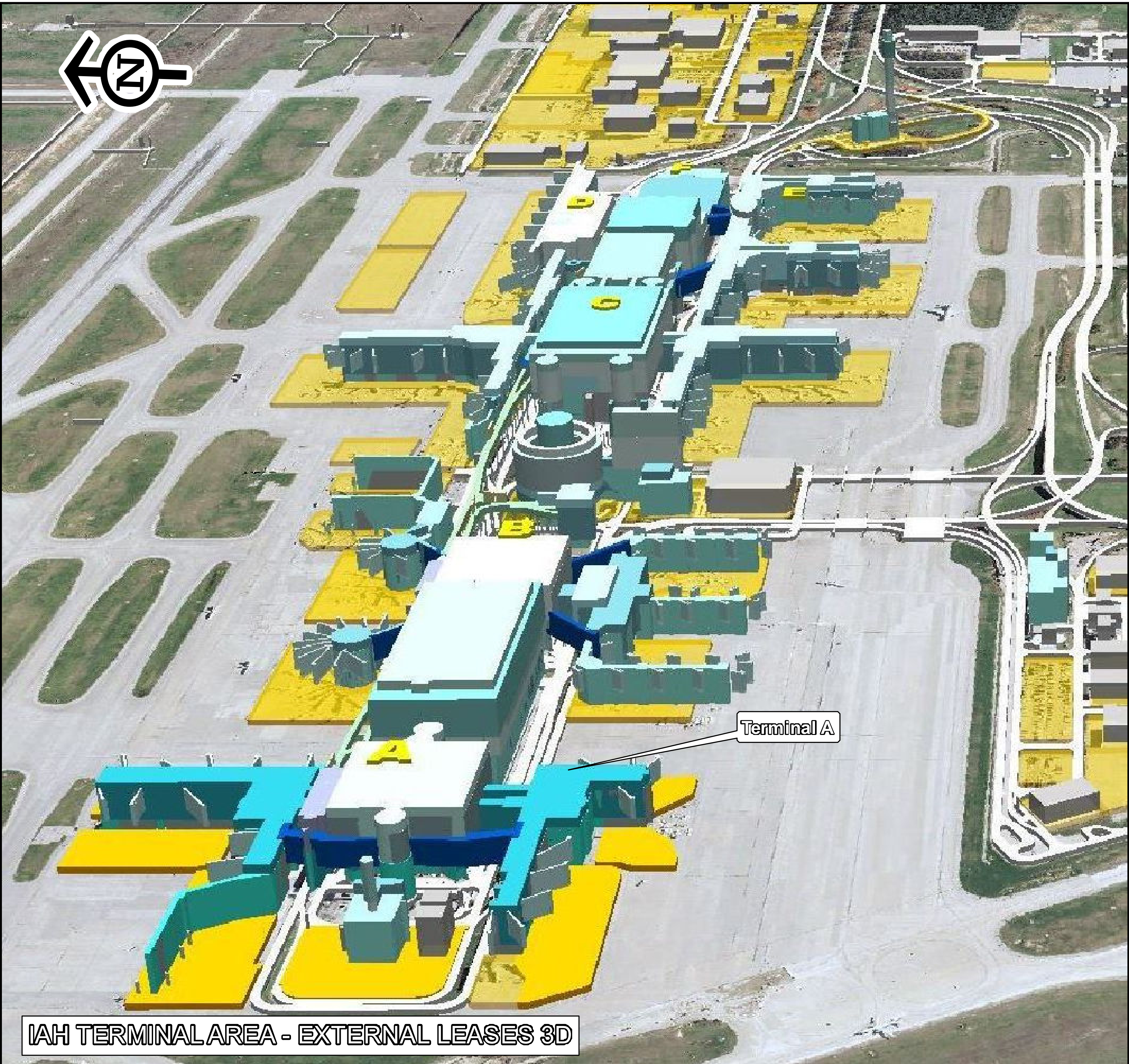


BUSH INTERCONTINENTAL AIRPORT LEASE STUDY

<http://www.fly2houston.com>

Jocelyn Le

Date: 11/18/2014



IAH TERMINAL AREA - EXTERNAL LEASES 3D



IAH Named Best Airport in the U.S.

IAH has been named the "Best Domestic Airport" by Executive Travel magazine as part of the publication's Leading Edge Awards for 2013.

The 11th annual survey of frequent business travelers revealed the readers' picks for top travel-related companies and facilities, with categories ranging from best hotels to best rental car companies to best airport. Readers of the publication are primarily global business travelers who take an average of 38 roundtrip flights a year. According to the magazine, the Leading Edge Awards were developed to honor travel providers that offer the most innovative, high-quality products to business travelers.

"We are constantly working to improve the overall customer experience at George Bush Intercontinental Airport," says IAH General Manager Carl Newman. "So it's always gratifying when we get positive feedback from our passengers. It tells us that we're on the right track and provides us with motivation to work even harder in the future."

Commercial Development

The Houston Airport System's Commercial Development Department is honored to help develop and grow business within the airport. Please see the video below to see why Houston is the 1.

Concession Opportunities

A wide range of concession opportunities are available at Houston's airports. Within the terminal there are a broad range of food & beverage, retail, and customer service opportunities. Concession contracts are awarded via competitive solicitation process. When a contract expires or the need for a new concession is determined a Request for Proposals will be posted on this website. Please go to the Contracting Opportunities page for current opportunities under the type labelled "Concession Services."

Terminal A is one of the two original terminals when Intercontinental Airport-Houston was built in 1969. Over the years, Terminal A has undergone a number of changes from the re-configuration of airline gates to a secure connection to the other airport terminals via the overhead train known as the Automated People Mover. Terminal A now serves eight airlines and provides travelers with 18 restaurants and eight shops to choose from. Terminal A is the enduring link from IAH's historical origins to its future.



TERMINAL A - EXTERNAL LEASES 3D

Legend

IAH TENANT LEASES

Tenant

AIR CANADA
AIR COMMON
ALASKA AIRLINES OPS
AMERICAN

BSO

CONCESSIONS

CONTINENTAL AIRLINES

DELTA

FRONTIER

HAS

MECH/ELEC

OTHER

PUBLIC

SERVISAIR

SPIRIT

TSA Office

UNASSIGNED

UNENCLOSED

UNENCLOSED - AMERICAN

UNENCLOSED - UNASSIGNED

UNENCLOSED DELTA

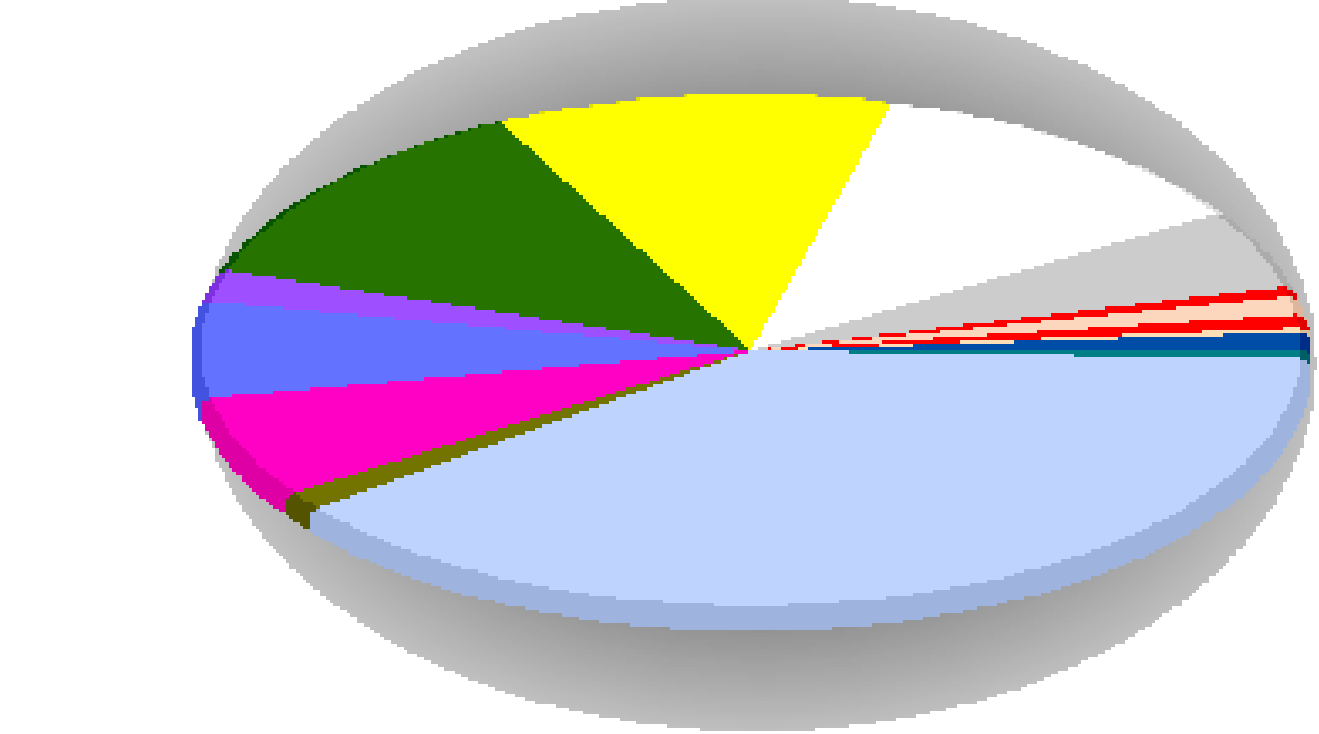
UNENCLOSED-AMERICAN

UNITED

US AIRWAYS

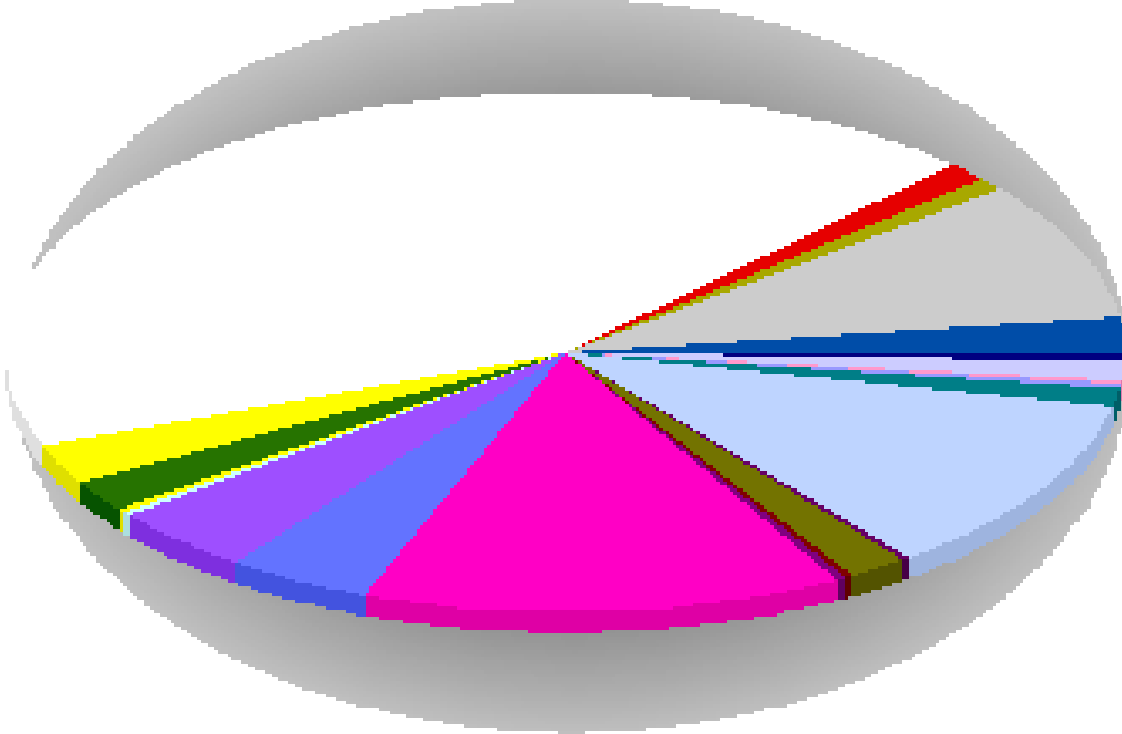
VACANT

IAH TERMINAL A INTERNAL LEVEL 1 LEASES

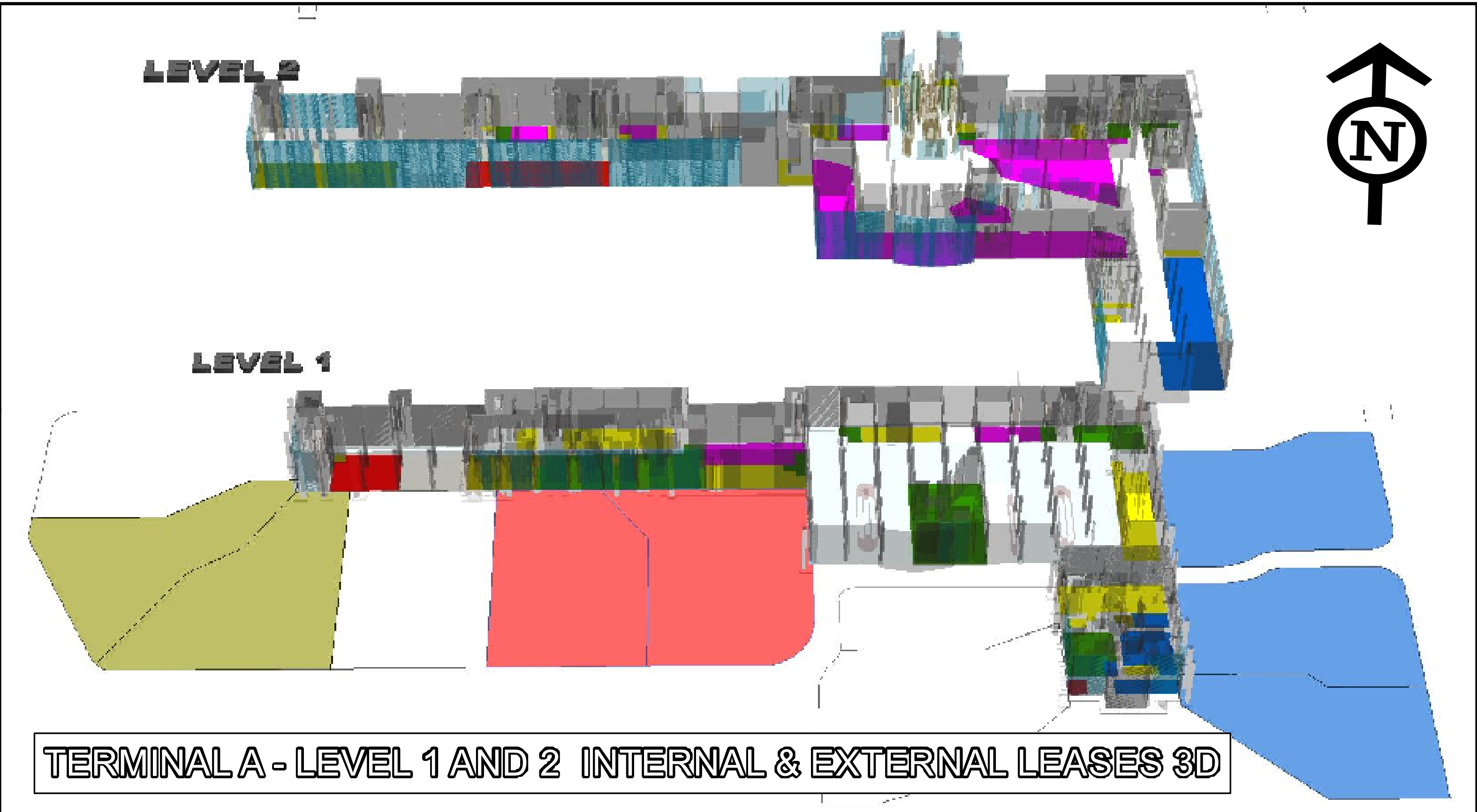


TOTAL SQUARE FEET = 300,546

IAH TERMINAL A INTERNAL LEVEL 2 LEASES



TOTAL SQUARE FEET = 320,636



TERMINAL A - LEVEL 1 AND 2 INTERNAL & EXTERNAL LEASES 3D



TERMINAL A - LEVEL 1 INTERNAL & EXTERNAL LEASES 3D



TERMINAL A - LEVEL 1 INTERNAL & EXTERNAL LEASES